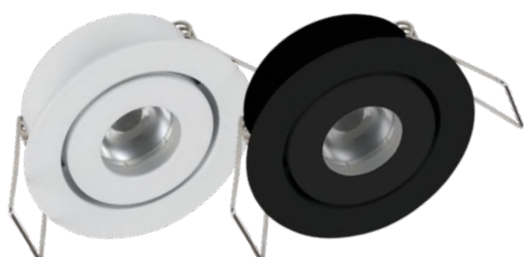




# Feature-LIGHTZ



Strong in its simplicity, that's what the Feature LED spot is all about. This elegant spot is a true all-rounder that will lift the atmosphere of any interior. It's great for illuminating items that you want to feature. It is made from solid aluminium.

## Feature LED Spot

SLDL614T

LED power	2.2W
Luminaire output	175 Lumens
Power supply	350 to 700mA max - constant current
Dimmable	Yes, with a LO5021 driver
Dimensions	Ø 50 x 21mm
Beam angle	30°
Tilt angle	35°
IP rating	IP44
CRI	90+CRI
Forward voltage	3.2 V
Insulation coverable Luminaire	Yes, IC-4
Efficacy	79 Lm/W

### how to specify

e.g. SLDL614T-30-30-P-W

Product	Beam	Colour Temp K	Trim Finish Colour
SLDL614T	30 = 30°	27 = 2700K 30 = 3000K 40 = 4000K	W = White B = Black

